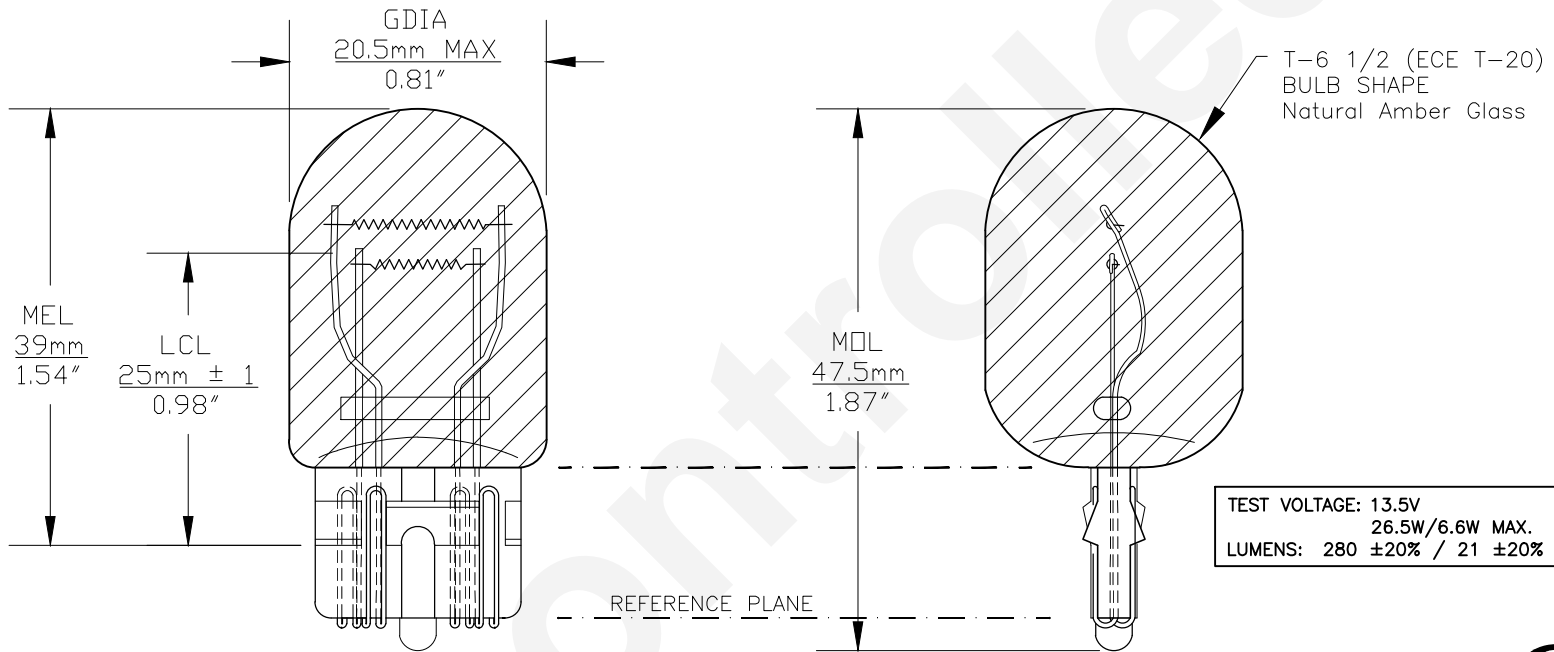




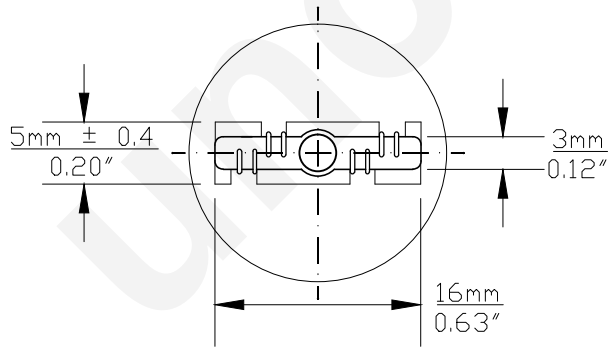
PART NO.	BASE TYPE	DESIGN VOLTS	DESIGN AMPS	MSCD	FILAMENT TYPE	AVERAGE LIFE HOURS	REVISIONS			
							REV #	DESCRIPTION	DATE	APPROVED
7443NALL	Glass Wedge W3X16q (T-6 1/2)	13.5V	1.75±15% 0.42±15%	22.0±20% 1.67±20%	C-6 C-6	1000 2000	1	ISSUED	11/13/2008	D.C.
							2	REVISED LCL TOLERANCE	07/02/2012	D.C.
							3	REDRAWN FOR ADDITIONAL VIEWS	06/27/2014	R.M.



TEST VOLTAGE: 13.5V
26.5W/6.6W MAX.
LUMENS: 280 ±20% / 21 ±20%

0° VIEW

90° VIEW



BASE BOTTOM VIEW



Note: Made according to ECE/R37 specifications

UNLESS OTHERWISE SPECIFIED: DIMENSIONS ARE IN INCHES TOLERANCES		CEC INDUSTRIES LTD	
DECIMALS	ANGULAR	599 BOND STREET LINCOLNSHIRE, IL 60069	
.XX ± .05	± 0.5°		
.XXX ± .010			
FRACTIONAL	± 1/64		
DRAWN D. C.	DATE 11/13/2008	TITLE LIGHT BULB NO. 7443NALL (WY21/5W)	
CHECKED	SIZE A	FSCM NO.	DWG NO. 7443NALL
DESIGN	SCALE	PLOT SCALE	REV 3
MATERIAL	FILE 7443NALL.pdf	SHEET 1 OF 1	
		DRAWING NOT TO SCALE	